



CHUB



2017 PRODUCT GUIDE




At Chub we pride ourselves on developing innovative fishing tackle that inspires you to explore new fishing environments, undertake new adventures and overcome challenges giving you greater enjoyment on the bank.



CONTENTS

RODS	2-7
BIVVIES	8-17
FURNITURE.....	18-25
SLEEPING BAGS.....	26-31
CLOTHING/FOOTWEAR.....	32-39
BAGS/STORAGE	40-51
CARP CARE	52-59
COOKWARE	60-65
SAT-A-LITE	66-69
BANKWARE	70-75



outkast

RODS

Manufactured using the finest quality carbon, guides and fittings, we are pleased to produce a range of rods to meet every requirement and budget, whilst also looking good too!



OUTKAST SMALL WATER

Beautiful lightweight rods designed for closer-in Carp fishing.

- Ideal for stalking and floater applications
- New raw carbon sanded finish well suited to controlling large Carp at close quarters
- Matt black butt cap and collars
- Exclusive DPS 18 matt black reel seat
- Crisper action for more control
- Full length shrink wrap handle
- Double leg gunmetal SiC lite guides
- Line friendly contoured line clip
- Black laser etched butt grip
- Hook keeper ring

Product Code	Length (ft/m)	Test Curve (lb)	Weight (g/oz)	Sections
Outkast Compact:				
1364409	10' / 3.05	3	240 / 8.47	2
Outkast Small Water:				
1359697	11' / 3.35	2.25	240 / 8.47	2
1359696	12' / 3.66	2.25	280 / 9.88	2
Outkast:				
1359698	12' / 3.66	2.50	295 / 10.40	2
1359699	12' / 3.66	2.75	300 / 10.58	2
1359700	12' / 3.66	3.00	324 / 11.43	2
Outkast Full Cork:				
1359701	12' / 3.66	2.50	295 / 10.40	2
Outkast 50:				
1359702	12' / 3.66	3.00	347 / 12.24	2
1359703	12' / 3.66	3.25	356 / 12.56	2
1359704	12' / 3.66	3.50	379 / 13.37	2
1359705	12'6 / 3.81	3.25	411 / 14.50	2
1359706	13' / 3.96	3.50	443 / 15.63	2



OUTKAST PLUS STALKING RODS

Designed for lightweight and roving approaches, on smaller waters or snaggy swims.

- High modulus carbon construction
- Powerful through action
- Anti-flash matt blank finish
- Robust double leg SiC guides
- Japanese shrink wrap handle
- Folding hook keeper ring
- Gun metal Anodised collars and butt cap

6' powerful through action	9' powerful progressive action	10' crisp progressive action
-------------------------------	-----------------------------------	---------------------------------



Product Code	Length (ft/m)	Test Curve (lb)	Weight (g/oz)	Sections
1325359	6' / 1.83	2.75	162 / 5.71	1
1325360	9' / 2.74	2.50	210 / 7.40	2
1325361	10' / 3.05	2.50	260 / 9.17	2

OUTKAST SPOD

Progressive power action for accuracy at range. Designed to cope with the rigours of all modern day bait delivery.

- Double leg gunmetal SiC lite guides
- Stepped up power in butt section
- Test curve of around 5lb

Product Code	Length (ft/m)	Test Curve (lb)	Weight (g/oz)	Sections
1359707	12' / 3.66	5.00	380 / 13.40	2

OUTKAST MARKER

Responsive tip with a powerful butt section to make feature finding at range both easier and more effective.

- Graduated depth marks at 6 and 12 inch intervals
- Progressive power action
- Double leg gunmetal SiC lite guides
- Stepped up power in butt section
- Test curve of around 4lb

Product Code	Length (ft/m)	Test Curve (lb)	Weight (g/oz)	Sections
1359708	12' / 3.66	4.00	375 / 13.23	2



OUTKAST NET

Strong and robust designed net for use under the toughest conditions



- High quality stainless steel spreader block
- Anodised and laser etched butt cap with Japanese shrink rubber handle
- Medium depth green mesh
- Net retaining loop to release mesh when a fish is netted
- Supplied with a nylon draw cord net case
- Slim high modulus carbon handle and net arms



Product Code	Length (cm/in)	Diameter (cm/in)
1359711	180cm	42"

RS-PLUS

Value for money rods with a progressive action perfectly suited to modern carp angling.

- Progressive action
- Slim & lightweight matt black carbon fibre blank
- Double leg SIC guides throughout
- Line friendly contoured line clip
- 18mm gunsmoke grey reel seat
- Japanese shrink wrap butt grip
- Anodised and laser etched butt cap
- 1378150, 1378151, 1378152 has a 50mm start guide.
- 1378047, 1378048, 1378149 has a 40mm start guide.

Product Code	Length (ft/m)	Test Curve (lb)	Weight (g/oz)	Sections
1378047	12' / 3.66	2.50	305 / 10.76	2
1378048	12' / 3.66	2.75	310 / 10.93	2
1378149	12' / 3.66	3.00	330 / 11.64	2
1378150	12' / 3.66	3.00	330 / 11.64	2
1378151	12' / 3.66	3.25	330 / 11.64	2
1378152	12' / 3.66	3.50	345 / 12.17	2



RS-PLUS SPOD

A workhorse of a spod rod, designed for heavy use and repeated casting.

- Easy to compress with a range of different spods
- Powerful progressive action

Product Code	Length (ft/m)	Test Curve (lb)	Weight (g/oz)	Sections
1378155	12' / 3.66	4.5	375 / 13.23	2



RS-PLUS MARKER

Well balanced marker rod to punch out large marker floats with big leads.

- Progressive action
- Responsive tip
- 6 inch and 12 inch depth markers
- Matt black blank
- Styled to match the S-Plus range

Product Code	Length (ft/m)	Test Curve (lb)	Weight (g/oz)	Sections
1378154	12' / 3.66	3.75	365 / 12.87	2



RS-PLUS LANDING NET

A strong and robust net designed to be used under the toughest conditions. The subtle black cosmetics perfectly match the RS+ carp rod range.

- Slim carbon handle with a Japanese shrink rubber handle
- Carbon net arms with indicator marks to show they are fully inserted
- Soft fish friendly mesh material
- Features a unique retaining loop that releases the mesh when a fish is netted



Product Code	Length (cm/in)	Diameter (cm/in)
1378156	180cm	42"

VANTAGE FINGER STALL

- Supple but hardwearing leather
- Adjustable elastic wrist band
- Quick release press stud fastening



Product Code
1325241

VANTAGE TIP TECTORS

- Slim design
- Padded with reinforced tip section
- Velcro closure holds rod section together tightly
- Sold in pair with additional Velcro rod band

Product Code
1325288



VANTAGE NEOPRENE ROD BANDS

- 2 straps in a pack
- Zipped lead pocket in larger strap
- Stretchy neoprene for just the right amount of tension
- Velcro closure – secure but still quick and easy to remove

Product Code
1325289



VANTAGE REEL WRAP

- Handy zipped lead pocket
- Can be clipped together when used in multiples
- Hard wearing outer material
- Versatile interlocking design
- High level of padded protection
- External zipped lead pocket

Product Code
1325290





BIVVIES

Chub bivvies and shelters are designed in the UK for worldwide use, and manufactured from top quality and durable materials. We ensure that each model has been extensively tested during development guaranteeing that the angler can rely fully on Chub shelters during any carpin' session.



	DIMENSIONS (cm)			CLIMATEX	NYLON	10000 HH	5000 HH	GROUND SHEET	WRAP AVAILABLE	CLEAR DOOR	ZIP OFF FRONT	POLE PIECES	PAGE NUMBER
	Width	Depth	Height										
VIZOR LITE BIVVY	280	220	150	●		●		●	●	●	●	3	12
VANTAGE BIVVY 1 MAN	280	235	135	●		●		●	●	●	●	4	11
VANTAGE BIVVY 2 MAN	305	290	155	●		●		●	●	●	●	4	11
SUPER CYFISH 1 MAN	280	235	135		●		●	●	INCLUDED	●	●	5	13
SUPER CYFISH 2 MAN	330	280	160		●		●	●	INCLUDED	●	●	5	13
SUPER CYFISH DOME 1 MAN	330	280	160		●		●	●	TWIN SKIN	●	●	5	13
SUPER CYFISH DOME 2 MAN	340	305	175		●		●	●	TWIN SKIN	●	●	5	13
RS PLUS MAX	280	230	135		●		●	●	●	●	●	3	14
RS PLUS BIVVY	280	230	130		●		●	●	●	●	●	3	15
RS PLUS SHELTER	280	150	130		●		●	●	●	●	●	3	15
TRI-BRID	250	240	130		●		●	●	●	●	●	3	14
OVAL 55"	245	132	N/A		●		●	●				N/A	16
OVAL 60"	270	160	N/A		●		●	●				N/A	16

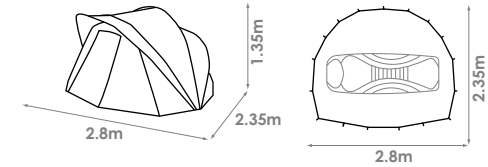
VANTAGE BIVVY

With the Vantage™ bivvy, Chub offers the absolute best in innovative design. This high quality shelter offers an abundance of extra space, comfort, protection and adaptability. The Vantage Bivvy features a new design, manufactured from a sturdy 16mm 4 section frame engineered from 6061 aluminium with quick release joints and collars to guarantee a rock solid set up. As with all Chub bivvies it is extremely versatile and is supplied complete with interchangeable front panels and a door system that provides multiple options for whichever setup you prefer. Thanks to the high performance breathable Climatex® material, complemented by the unique Back Draft™ Ventilation System, this bivvy can be adapted perfectly to any kind of weather condition.

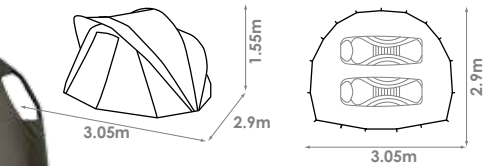
- Chub's own Climatex® high performance fabric 10,000 mm Hydrostatic Head
- New 4-section rib system for fast and easy set-up
- Split pole design for bigger bedchairs
- Wide angle back pole for increased inner space
- Unique 4-point single tension strap system
- Enlarged storm peak for wider protection
- Unique Back Draft™ Ventilation System
- Unique rod chock strap system
- Full front set of clear window panels included
- Full zip-on/off mozzzy panel in 'rip stop' mesh
- Supplied with In-line cam lock bivvy tension bars
- Completely removable door system
- Heavy duty groundsheet with dual clip and elastic pegging system
- Full set of heavy duty T-pegs and zip bag included
- One and two man option



1 Man



2 Man



Product Code	Size	Height (m/ft)	Width (m/ft)	Depth (m/ft)	Weight (kg/lb)
1378166	1 Man	1.35/4.43	2.80/9.18	2.35/7.71	12.3kg/27.12LB
1378168	2 Man	1.55/5.09	3.05/10.00	2.90/9.60	14.7kg/32.43LB

VANTAGE OVERWRAP

Overwrap for the Vantage bivvy for added cold weather protection and reduced condensation.

- Chub's own Climatex® high performance fabric 10,000 mm Hydrostatic Head
- Unique Back Draft™ Ventilation System
- Unique rod chock strap system



Product Code	Size	Height (m/ft)	Width (m/ft)	Depth (m/ft)	Weight (kg/lb)
1378167	1 Man	1.35/4.43	2.80/9.18	2.65/11.38	2.2kg/4.85LB
1378169	2 Man	1.55/5.09	3.05/10.00	3.30/12.36	2.4kg/5.29LB

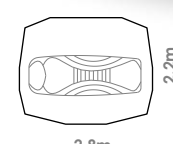
VIZOR LITE BIVVY

The new Vizor Lite is a massive leap forward in bivy design. In a market where the popularity of large bedchairs has taken over we felt it was time to create a standard sized shelter that can accommodate these. The unique split pole design and four point single span tension strap gives a completely new look.

- Enhanced shaping for increased floor space
- Utilising a split pole design to allow for bigger bedchairs
- Unique four point single tension strap
- Unique waterproof 'back draft' ventilation
- Ability to open back panel from the inside
- Removable 'zip out' front panel
- Door has both Mozzi and clear options
- Letter box style door capability
- Mozzi mesh side panels
- Full door overwrap available
- CHUB's exclusive Climatex material



Product Code	Size	Height (m/ft)	Width (m/ft)	Depth (m/ft)	Weight (kg/lb)
1359709	1 Man	1.5 / 4.9	2.8 / 9.2	2.2 / 7.2	12.7 / 28



VIZOR LITE OVERWRAP

- Full coverage overwrap
- Back draft ventilation
- CHUB's exclusive 10,000 Climatex material
- Removable two way door with clear window
- Supplier with T pegs and carry bag
- Shock corded pegging points



Product Code	Size	Height (m/ft)	Width (m/ft)	Depth (m/ft)	Weight (kg/lb)
1359710	1 Man	1.5 / 4.9	2.8 / 9.2	2.2 / 7.2	2.4 / -



CYFISH BIVVY

Our new Cyfish Bivvy offers execeptional value with a full overwrap system included.

- Front peak and side wings for exeptional protection
- Unique Back Draft Ventilation System
- 10000mm Hydrostatic Head
- New 4-section rib system for fast and easy set-up
- Spaced pole design for more usable space
- Rod Chock Strap system
- Full front set of clear window panels included
- Heavy duty groundsheet with dual clip and elastic pegging system
- 2 way removable door system with green, clear and mozzy window panels
- Standard supplied with tension bars, heavy duty T-pegs and Zipped carry bag
- Supplied with full overwrap



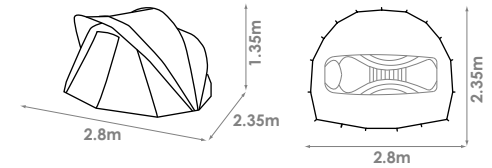
Inklusive Overwrap



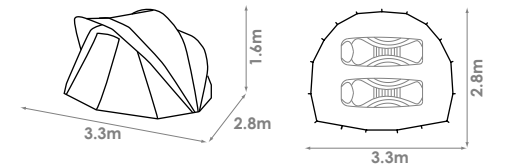
Product Code	Size	Height (m/ft)	Width (m/ft)	Depth (m/ft)	Weight (kg)
1404661	1 Man	1.35 / 4.43	2.8 / 9.19	2.35 / 7.71	16.5
1404662	2 Man	1.6 / 5.25	3.3 / 10.83	2.8 / 9.19	20.5



1 Man



2 Man



CYFISH DOME

A twin skinned version of our ever popular Cyfish bivvy which features an inner mesh capsule with built in groundsheet.

- Removable inner mesh capsule with built-in groundsheet
- Unique Back Draft Ventilation System
- 10.000mm Hydrostatic Head
- 2-way removable door system with green, clear and mozzi window panels
- Front panel with mozzy side and door windows
- Rod Chock Strapsystem
- Full front set of clear window panels included
- Supplied complete with separate HD groundsheet, Tension bars, Heavy duty T-pegs and zipped carry bag

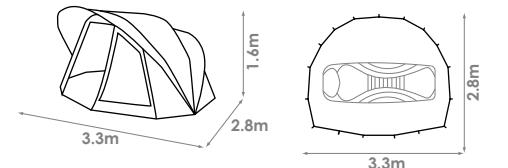


NEW

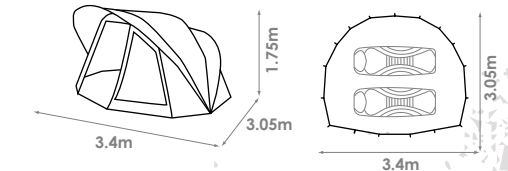
Product Code	Size	Height (m/ft)	Width (m/ft)	Depth (m/ft)	Weight (kg)
1404663	1 Man	1.6 / 5.25	3.3 / 10.83	2.8 / 9.19	17.5
1404664	2 Man	1.75 / 5.74	3.4 / 11.15	3.05 / 10.01	21.5



1 Man



2 Man

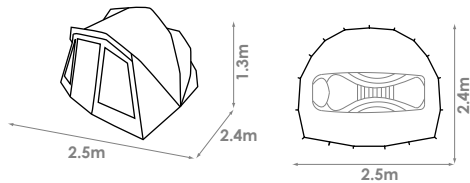




TRI-BRID SHELTER

Cross between a bivvy and a broolly, the Tri-Brid provides coverage for the largest of bedchairs.

- Removable front panel with mozzie windows
- Supplied complete with Tension bars, lightweight groundsheet, T-pegs and carry bag
- Unique Back Draft™ Ventilation System
- 5000mm hydrostatic head



Product Code	Size	Height (m/ft)	Width (m/ft)	Depth (m/ft)	Weight (kg)
1325461	1 Man	1.3 / 4.27	2.5 / 8.20	2.4 / 7.87	9.5



TRI-BRID BIVVY OVERWRAP

Add for winter conditions and to remove internal condensation.

- 5000mm Hydrostatic Head
- Supplied with full set of T-pegs and carry bag

Product Code	Weight (kg)
1325462	1.0





RS-PLUS BIVVY

An all new 2-pole 3-section frame which means it's quicker and simpler to set up and easier to transport in your quiver or system sleeve.

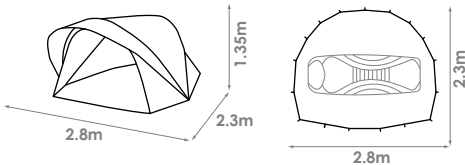
- Rigid 3-section 16mm 6061 aluminium poles
- 5000mm Hydrostatic head
- Full zip off front section
- Inline Bivvy Tension bars
- Detachable lightweight groundsheet
- Shock-corded pegging points
- Supplied with T-pegs and Carry Bag
- Completely removable 2-way door system
- Green or clear door window options
- Transport size: Length 158cm Diameter 18cm



RS-PLUS MAX BIVVY

An all new 3-pole 3-section frame means it's quicker and simpler to set up and easier to transport in your quiver or system sleeve.

- Extended hood and storm side panels
- Rigid 3-section 16mm 6061 aluminium poles
- 5000mm hydrostatic head
- Full zip off front section
- Inline bivvy tension bars
- Detachable lightweight groundsheet
- Shock-corded pegging points
- Supplied with T-pegs and Carry Bag
- Completely removable 2-way door system
- Mozzi and clear door window options
- Transport size: Length 158cm Diameter 20cm
- RS PLUS BIVVY WRAP is on page 16



Product Code	Size	Height (m/ft)	Width (m/ft)	Depth (m/ft)	Weight (kg/lb)
1325469	1 Man	1.35 / 4.4	2.8 / 9.8	2.3 / 7.5	8 / 17.6

RS-PLUS MAX OVERWRAP

Converts the Max Bivvy into a full twin skin system for all season protection and added insulation during colder conditions.



- The roll up front door has a clear see through window and the side panels can be rolled back and clipped into position for increased visibility and ventilation.
- 5000mm Hydrostatic head
- Roll up door with clear window
- Roll back side panels
- Shock corded pegging points
- Supplied with T-pegs and carry bag

Product Code	Size	Height (m/ft)	Width (m/ft)	Depth (m/ft)	Weight (kg/lb)
1325470	1 Man	1.3 / 4.2	2.9 / 9.5	2.4 / 7.8	2.4 / 5.3

RS-PLUS OVERWRAP

Product Code	Size	Height (m/ft)	Width (m/ft)	Depth (m/ft)	Weight (kg/lb)
1325473	1 Man	1.3 / 4.2	2.9 / 9.5	2.30 / 7.5	3.0 / 6.6

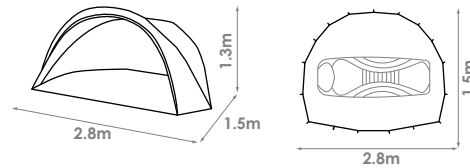




RS-PLUS SHELTER

An all new 2-pole 3-section frame which means it's quicker and simpler to set up and easier to transport in your quiver or system sleeve.

- Rigid 3-section 16mm 6061 aluminium poles
- 5000mm Hydrostatic head
- Inline Tension bars
- Detachable lightweight half groundsheet
- Shock-corded pegging points
- Supplied with T-pegs and Carry Bag
- Transport size: Length 158cm Diameter 14cm



Product Code	Size	Height (m/ft)	Width (m/ft)	Depth (m/ft)	Weight (kg/lb)
1325472	1 Man	1.3 / 4.3	2.8 / 9.8	1.5 / 4.9	5.2 / 11.5



OVAL UMBRELLAS – 55" & 60"

Neat, compact and stable, designed for short sessions or mobile angling.

- Rigid sprung steel frame
- perimeter skirt with velcro groundsheet attachments
- Velcro rod holders
- 4 fitted storm caps
- 2 x 26" storm poles
- Supplied with full set of T-pegs and carry bag



Product Code	Dimensions (cm/in)	Weight (kg/lb)
1325088	140 / 55	4.5 / 9.9
1325089	152 / 60	4.8 / 10.5



BIVVY PEGS



20 PEG PACK



BIVVY TABLE



BEDCHAIR PILLOW

Product Code	Model	Size (in)
1325079	Bivy Pegs	8
1325379	20 Peg Pack	n/a

Product Code	Model	Width (cm)	Height (cm)	Depth (cm)	Weight (kg)
1325109	Bivy Table	47.5	23-34.5	30.5	1.075

Product Code	Model	Size	Depth (cm/in)	Width (cm/in)
1325078	Bedchair pillow	Large	45 / 17.7	70 / 27.5





FURNITURE

Chub furniture is designed, developed and tested in the UK, Constructed from lightweight aluminum with good quality material, the Chub furniture are both highly comfortable and durable. The innovative design of the flatbeds eliminates the need for a hand wheel which enables ease of use, making it extremely easy to fold in or out. Our beds range from lightweight and compact to maximum comfort due to the extra thick added fleece mattress.



VANTAGE FLATBED WIDE 8-LEG

Designed to offer maximum comfort, the Vantage bed gives you an unrivalled sleeping experience. The 50mm thick padded mattress with micro-fleece finish and anti-sagging connection system, combined with the 100% flat frame, makes the bedchair a one of a kind in carp fishing. This 8-legged extra wide version even offers additional room for the demanding carper.



- “Ultra-lightweight 8-leg aluminium frame
- Extra wide design
- Full-flat folding brackets
- Smart folding design that leaves plenty of room to fold the sleeping bag inside
- Folding legs to save space during transport
- High-end mattress connection system that prevents sagging
- Shaped fleece pillow
- Adjustable legs
- Oversized swivel mud feet
- Extra thick 50mm padded mattress with a comfortable fleece center
- Chunky leg locks for complete stability”Nylon stuff sack

Product Code	Length (cm)	Width (cm)	Height (cm)	Weight (kg)
1378157	216	97	37	11.2



VANTAGE FLATBED 6-LEG

Designed to offer maximum comfort, the Vantage bed gives you an unrivalled sleeping experience. The 50mm thick padded mattress with micro-fleece finish and anti-sagging connection system, combined with the 100% flat frame, makes the bedchair a one of a kind in carp fishing.

- Ultra-lightweight 6-leg aluminium frame
- Extra wide design
- Full-flat folding brackets
- Smart folding design that leaves plenty of room to fold the sleeping bag inside
- Folding legs to save space during transport
- High-end mattress connection system that prevents sagging
- Shaped fleece pillow
- Adjustable legs
- Oversized swivel mud feet
- Extra thick 50mm padded mattress with a comfortable fleece center
- Chunky leg locks for complete stability”Nylon stuff sack



Product Code	Length (cm)	Width (cm)	Height (cm)	Weight (kg)
1378158	215	84	40	9.1

OUTKAST FLATBED

The Outkast bed is equipped with a very comfortable fully padded mattress that features a super strong mesh central section. This section makes the bed lighter and the mattress more comfortable. Thanks to the clever hinging design, the bed is 100% flat when folded out and can easily contain a sleeping bag inside when folded down for transport.

- Strong compact 6-leg aluminium frame
- Full-flat design thanks to folding brackets
- Smart folding design that leaves plenty of room to fold the sleeping bag in
- Adjustable legs
- Oversized swivel mud feet
- Thick padded mattress with extra strong comfortable mesh centre part
- Comfortable shaped pillow
- Chunky leg locks for complete stability



Product Code	Length (cm)	Width (cm)	Height (cm)	Weight (kg)
1377364	197	79	36.5	8

RS-PLUS BEDCHAIR

The RS-PLUS bed offers great value for money. Thanks to the clever bracket design, the bed is 100% flat when folded out and can easily contain a sleeping bag inside when folded down for transport. A great bed for its class!

- Robust 6-leg steel frame with a subtle black finish
- Full-flat folding brackets
- Smart folding design that leaves plenty of room to fold the sleeping bag inside
- Adjustable legs
- Swivel mud feet
- Padded mattress design
- Strong nylon strap to fix the bedchair when folded
- Leg locking pins



Product Code	Length (cm)	Width (cm)	Height (cm)	Weight (kg)
1378161	210	82	30-40	9.4

RS-PLUS CHAIR MATE

An easy to use chair which will help eliminate 'bedchair back'. Just place across the bedchair and secure in place by the straps. These straps allow the RS-PLUS Chair Mate to be used on bedchairs with padded perimeters giving more freedom than the clip type of chair. Universal size fits all bedchairs.

- Lightweight aluminium frame
- Compact design for storage inside bedchair
- Can be used on any size bedchair



Product Code	Length (cm)	Width (cm)	Height (cm)	Weight (kg)
1378165	38	48	49	2.7

VANTAGE CHAIR

Designed to offer maximum comfort, the Vantage Chair features a 50mm thick padded mattress with a comfortable micro-fleece finish. Combined with the anti-sagging connection system it offers you unrivalled comfort and durability.

- Ultra-light weight aluminium frame
- Fully adjustable back
- High-end cover connection system that prevents sagging
- Shaped fleece pillow
- Adjustable legs
- Oversized swivel mud feet
- Extra thick 50mm padded mattress with a comfortable fleece center
- Chunky leg locks for complete stability



Product Code	Length (cm)	Width (cm)	Height (cm)	Weight (kg)
1378159	55	52	39/105	6.35

VANTAGE LONG LEG RECLINER

Designed to offer maximum comfort, the Vantage Long Leg Chair features a 50mm thick padded mattress with a comfortable micro-fleece finish and anti-sagging connection system. The long-leg feature, combined with the nylon covered arm rests, makes it one of the most relaxing recliners on the market today.

- “Ultra-lightweight aluminium frame
- Fully adjustable back
- High-end cover connection system that prevents sagging
- Shaped fleece pillow
- Extra long, adjustable legs
- Oversized swivel mud feet
- Extra thick 50mm padded mattress with a comfortable fleece center
- Chunky leg locks for complete stability”



Product Code	Length (cm)	Width (cm)	Height (cm)	Weight (kg)
1378160	54	60	45/118	7.95

OUTKAST CHAIR

Designed for maximum comfort the Outkast Chair has extra long individually adjustable legs with swivelling non-slip mud feet for added height and stability. Fully adjustable, reclining, hi-back and arm rests make this chair ideal for many types of angling. Equipped with a ventilated fully padded material.

- Strong steel & aluminium hybrid frame
- Comfortable armrests
- Adjustable legs
- Fully adjustable back
- Swivel mud feet
- Thick cover with extra strong mesh center
- Shaped head rest
- Chunky leg locks for complete stability



Product Code	Length (cm)	Width (cm)	Height (cm)	Weight (kg)
1377365	54	54	37/98	7

RS-PLUS SUPERLITE CHAIR

The RS-PLUS SuperLite is a low profile chair ideal for many types of angling. Extremely light and compact, it's ideal for the mobile angler, those short of transport space and for stalking when keeping low and out of sight is a must. With its lightweight and fold-flat design it is also ideal for use in and around a bivvy - the perfect guest chair!

- Lightweight aluminium frame with a subtle black finish
- Super compact transportation dimensions
- Integrated arm rests
- Extra padded mattress design
- Locking leg design



Product Code	Length (cm)	Width (cm)	Height (cm)	Weight (kg)
1378164	48	33	23/57	2.2

RS-PLUS COMFY CHAIR

The chair is built around a robust frame of lightweight, high-tensile steel and has four independently adjustable legs and swivelling mud feet. It also features aluminium arm rests, and a two-tone hardwearing material.

- Robust steel frame with a subtle black finish
- Aluminum arm rests
- Adjustable legs
- Swivel mud feet
- Extra padded mattress design
- Leg locking pins

Product Code	Length (cm)	Width (cm)	Height (cm)	Weight (kg)
1378163	42	48	52	5.5



RS-PLUS CHAIR

The RS-PLUS chair is built around an extremely stable and robust steel frame. The chair is fully adjustable with folding front and rear legs which include swivelling mud feet and individual plate lock leg adjusters. The elasticated material is both comfortable and durable with extra padding around the back area for added support.

- Robust steel frame with a subtle black finish
- Adjustable legs
- Swivel mud feet
- Extra padded mattress design
- Leg locking pins

Product Code	Length (cm)	Width (cm)	Height (cm)	Weight (kg)
1378162	42	48	52	4.3







SLEEPING BAGS

A clever designed sleeping bag range is developed for year round comfort, for every weather condition for every carp angler out there.



VANTAGE 5 SEASON SLEEPING BAG

This 5 Season Sleeping Bag is designed for year-round comfort that has an incredible warmth to weight ratio, for every weather condition for every carp angler.

- High quality silicone treated hollow fibre fill
- 100% Peachskin breathable and waterproof outer material
- Oversized No.10 coil crash zips
- Large internal zip baffles and slide guides
- Konnect-3 attachment system for increased warmth and freedom of movement
- 3/4 Length zips for Hot-Foot box
- Smooth polyester lined base for easy movement
- Fleece lined upper for increased heat retention
- Internal hand warmer pockets for wrap-around comfort
- Removable wipe clean heavy-duty foot protector
- Unique Hot-Foot drawstring
- Full compression bag
- Comes in Extra wide design (1404659)



Product Code	Length (cm)	Width (cm)
1404658	215	90
1404659	215	100



VANTAGE WATERPROOF BED COVER

Manufactured from waterproof and breathable climatex material perfect for overnighers under the stars when a little extra protection from the elements is needed.

- Climatex breathable and waterproof outer material
- 200mm outer baffle for allround protection
- Fleece lined for increased heat retention
- Internal hand warmer pockets for wrap-around comfort
- Compatible with Chub sleeping bag foot protector
- Full compression bag



Product Code	Length (cm)	Width (cm)
1404657	220	90



VANTAGE THERMAL BED COVER

An extra layer of insulation designed to give extra warmth over a sleeping bag in winter or used on its own as a cover in the warmer months.

- High quality Silicone treated hollow fibre fill
- 190T Ripstop Outer material
- Can also be used independently on warm summer nights
- Fleece lined for increased heat retention
- Internal hand warmer pockets for wrap-around comfort
- Compatible with Chub sleeping bag foot protector
- Unique Hot-Foot drawstring
- Full compression bag



Product Code	Length (cm)	Width (cm)
1404660	220	90



OUTKAST SLEEPING BAG

A sleeping bag designed for the mobile carp angler with the Konnect-3 attachment system for freedom of movement.

- High quality silicone treated hollow fibre fill
- Oversized No.10 coil crash zips
- Large internal zip baffles and slide guides
- Konnect-3 attachment system for increased warmth and freedom of movement
- 3/4 Length zips for Hot-Foot box
- 190T Ripstop Outer material
- Smooth polyester lined base for easy movement
- Fleece lined upper for increased heat retention
- Internal hand warmer pockets for wrap-around comfort
- removable wipe clean heavy-duty foot protector
- Unique Hot-Foot drawstring
- Full compression bag
- Compatible with Chub Vantage Thermal bed cover and Waterproof bed cover

Product Code	Length (cm)	Width (cm)
1404655	215	86



OUTKAST TOPSKIN

A lightweight, super warm hybrid bag that bridges the gap between a standard thermal cover and a sleeping bag design. Great for extra warmth in winter or on its own in summer.

- High quality silicone treated hollow fibre fill
- 190T Ripstop Outer material
- Smooth polyester lined for comfort
- Internal hand warmer pockets for wrap-around comfort
- removable wipe clean heavy-duty foot protector
- Unique Hot-Foot drawstring
- Full compression bag Compatible with Chub Vantage Thermal bed cover and Waterproof bed cover

Product Code	Length (cm)	Width (cm)
1404656	215	86



VANTAGE SLEEPING BAG CARRYALL

Easier than fitting a bag back in a compression sack at the end of a long session.

- Central two way zip
- Buckle compression straps
- Carry handle

Product Code	Length (cm/in)	Diameter (cm/in)
1359663	62 / 24.40	38 / 14.96







CLOTHING

Stand out from the crowd in our new range of clothing. Manufactured using durable and high quality materials, this modern range offers the perfect mix of functionality, quality and style. Perfect to wear on and off the bank.



VANTAGE ALL WEATHER SUIT

This multifunctional 3-in-1 suit features a Climatex® 3000 shell on both the jacket and trousers, providing 3000mm of waterproof protection and 3000g/m² of breathability. This unique laminated fabric has the advantages of a softer and quieter touch and a more durable and consistent quality. This suit offers the ultimate protection against the tough conditions carp anglers have to endure.

Designed for the demanding carp angler, the Vantage clothing range combines functionality and durability with an adventurous outdoor edge. Vantage clothing uses Climatex® and Thermatex® technologies to protect anglers against the elements, keeping you warm, dry and comfortable no matter what the conditions during the session.

- Waterproof and breathable Climatex® 3000 outer shell material
- Thermatex 500 thermal insulation in the jacket and trousers provides unbeatable warmth
- Detachable heavy duty fleece jacket
- Adjustable insulated hood
- Large capacity pockets, some with security zips
- Zip-out fleece which can be worn on its own
- Bib & brace style trousers with high freedom of movement
- Velcro wrist closure to prevent cold air coming in
- Zipped ankle openings and zip fly on trousers
- 100% Polyester"

Product Code	Size	Color
1377366	Medium	Olive Green
1377367	Large	Olive Green
1377368	X Large	Olive Green
1377369	XX Large	Olive Green
1377370	XXX Large	Olive Green



CLIMATEX 3000 ▶▶▶

THERMATEX ▶▶▶

VANTAGE HYBRID JACKET

The Vantage Hybrid Jacket combines the best of Thermatex insulation with the flexible advantages of 4-way stretch and wind blocking softshell. This unique lightweight jacket is great for sessions where you need protection from the chill of the wind but without sacrificing mobility. Designed for the demanding Carp angler, the Vantage clothing range combines functionality and durability with an adventurous outdoor edge. Vantage clothing uses Climatex® and Thermatex® technologies to protect anglers against the elements, keeping you warm, dry and comfortable no matter what the conditions during the session.

- Quilted torso features Thermatex 300 insulation, keeping the body warm and comfortable
- Stretchy wind blocking softshell material of the arm panels offer extra mobility
- Heavy duty, extra smooth main zip
- Compact packaway design
- Elastic-bound cuffs and waist protect against cold draft
- Generous zip sleeve pockets
- Chin protection system
- 100% Polyester



Product Code	Size	Color
1377371	Medium	Olive Green
1377372	Large	Olive Green
1377373	X Large	Olive Green
1377374	XX Large	Olive Green
1377375	XXX Large	Olive Green

THERMATEX ▶▶▶

VANTAGE QUILTED BODYWARMER

- "Thermatex 300 insulation keeps the body warm and comfortable
- Secured zippered pockets
- Modern aesthetics
- Adjustable waist
- Heavy-duty main zip
- 100% Polyester"



THERMATEX ▶▶▶

Product Code	Size	Color
1377376	Medium	Olive Green
1377377	Large	Olive Green
1377378	X Large	Olive Green
1377379	XX Large	Olive Green
1377380	XXX Large	Olive Green

VANTAGE PULL OVER HOODY

- Warm heavy duty brushed back jersey material
- Lined adjustable hood for extra warmth
- Modern Chub logo to front
- Large front pocket
- 60% cotton 40% polyester knitted fleece

Product Code	Size	Color
1377386	Medium	Burgundy Red
1377387	Large	Burgundy Red
1377388	X Large	Burgundy Red
1377389	XX Large	Burgundy Red
1377390	XXX Large	Burgundy Red



VANTAGE JOGGER

Comfortable and stylish jogger - perfect to wear on and off the bank. Works very well together with the Chub Full Zip and Pull Over Hoody.

- Warm heavy-duty brushed back jersey material
- Comfort fit design
- Elasticated waist
- Two large side pockets
- 60% cotton 40% polyester knitted fleece

Product Code	Size	Color
1377391	Medium	Olive Green
1377392	Large	Olive Green
1377393	X Large	Olive Green
1377394	XX Large	Olive Green
1377395	XXX Large	Olive Green



VANTAGE ZIP UP HOODY

- Warm heavy-duty brushed back jersey material
- Lined adjustable hood for extra warmth
- Heavy duty main zip
- Zipped side pockets
- Modern appearance
- Elasticated waist to ensure perfect fit
- 60% cotton 40% polyester knitted fleece

Product Code	Size	Color
1377381	Medium	Olive Green
1377382	Large	Olive Green
1377383	X Large	Olive Green
1377384	XX Large	Olive Green
1377385	XXX Large	Olive Green



VANTAGE BASE LAYER

- Thermatex 100 material drives moisture away from the body, maintaining a dry insulating layer of air in-between
- Extra smooth surface enables outerwear to slide over easily
- Use as a second skin during colder weather or ideal as a bivvy suit
- Zipped ankle openings and zip fly on trousers
- 100% Polyester - Brushed Poly Tricot



THERMATEx ▶▶▶

Product Code	Size	Color
1377396	Medium	Olive Green
1377397	Large	Olive Green
1377398	X Large	Olive Green
1377399	XX Large	Olive Green
1377400	XXX Large	Olive Green

VANTAGE BEANIE HAT

Comfortable beanie hat with a practical peak

- One size fits all
- 100% Acrylic



Product Code	Size	Color
1377401	FITS ALL	Burgundy Red and Grey

VANTAGE CAP

- Modern cap with an appealing design
- Made from comfortable cotton material
- One size fits all
- Cotton Twill



Product Code	Size	Color
1377402	FITS ALL	Olive Green

VANTAGE FIELD BOOT

Comfortable, waterproof and modern styled field boots for the anglers that wants a perfect combination of style and high performance quality.

- Waterproof up to 4 hours
- Comfortable, lightweight durable and breathable
- Made of robust action leather and nylon
- Warm and comfort because of the thermal lining
- Extra tough waterproof sole with deep non-slip tread pullback tag to put on easily



Product Code	Size (UK)	Size (US)	Size (EU)
1404635	7	7.5	41
1404636	8	8.5	42
1404638	10	10.5	44
1404639	11	11.5	45
1404640	12	12.5	46



VANTAGE ANKLE BOOT

Very comfortable, waterproof and modern styled ankle boots for the anglers that wants a perfect combination of style and high performance quality.

- Waterproof up to 4 hours
- Comfortable, lightweight durable and breathable
- Made of robust cow suede and nylon
- Warm and comfort because of the thermal lining
- Extra tough waterproof sole with deep non-slip tread pullback tag to put on easily

Product Code	Size (UK)	Size (US)	Size (EU)
1404642	7	7.5	41
1404643	8	8.5	42
1404644	9	9.5	43
1404645	10	10.5	44
1404646	11	11.5	45
1404647	12	12.5	46



VANTAGE CAMO TRAINERS

100% waterproof camo trainers designed for the active carp angler.

- Waterproof up to 4 hours
- Extremely comfortable and lightweight
- Unique camo design
- High fashion and very trendy
- Made of robust action leather and nylon
- Extra tough waterproof sole

Product Code	Size (UK)	Size (US)	Size (EU)
1404649	7	7.5	41
1404650	8	8.5	42
1404651	9	9.5	43
1404652	10	10.5	44
1404653	11	11.5	45
1404654	12	12.5	46



SIZE	UNITS	S	M	L	XL	XXL	XXXL
CHEST	INCHES	UP TO 37	38-40	41-43	44-46	47-49	50-52
WAIST	INCHES	30	32-34	34-36	36-38	39-41	42-44
INSIDE LEG <small>(CROTCH TO ANKLE)</small>	INCHES	30-31	31-32	32-33	33-34	33-34	34-35
CHEST	CM	UP TO 94	96-102	104-109	112-117	120-125	127-132
WAIST	CM	76	81-86	86-91	91-97	99-104	107-112
INSIDE LEG <small>(CROTCH TO ANKLE)</small>	CM	76-79	79-81	81-84	84-86	84-86	86-89





BAGS/STORAGE

Made from the highest quality materials, with robust heavy duty zips and quality stitching, this complete range is designed in the UK to undergo the rigors of modern carp fishing.





TRANSPORTER BARROW

A quality barrow that is capable of transporting heavy loads with ease. The extending front panel allows more weight to be placed over the wheel to keep the barrow balanced.

- Excellent load carrying capacity
- Large pneumatic wheel
- Quick release wheel attachment
- Underbarrow tray for small items
- Transport Dimensions (HxWxL):
14cm x 66cm x 103cm



Product Code	Height (cm)	Length (cm)	Width (cm)	Weight (kg)
1325365	95	161-183	78	18

VANTAGE BARROW BAG LARGE

Designed to keep all your tackle organised and within easy reach. The low profile design allows the bag to be split and stored under your bedchair.

- Two tier design for under bedchair storage
- Adjustable internal dividers
- Insulated bait/food section
- Reinforced easy clean water resistant base material
- Adjustable padded shoulder strap
- External mesh and zipped pockets



Product Code	Height (cm)	Length (cm)	Width (cm)	Weight (kg)	Capacity (litres)
1325292	40	34	68	3.8	90

VANTAGE BARROW BAG MEDIUM

A multi functional two tier barrow bag. The low profile design allows the bag to be split and stored under your bedchair.

- Two tier design for under bedchair storage
- Adjustable internal dividers
- Removable insulated pouch
- Reinforced easy clean water resistant base material
- Adjustable padded shoulder strap



Product Code	Height (cm)	Length (cm)	Width (cm)	Weight (kg)	Capacity (litres)
1325291	40	30	56	3.0	65



VANTAGE 5-STAR HOLDALLS

- Hybrid style holdalls
- Universal sizing accepts 12' 12'6" and 13' rods with 50mm guides
- Hybrid design, lower sleeve section, upper protection flap
- Each rod sleeve section has a stiffened butt protector and small external lead pocket
- Landing net handle pocket
- 2 Large external pockets to accept net, banksticks, flotation type weigh slings and storm poles
- Largest outer pocket will accept most broly systems up to 60"
- Smaller outer pocket for banksticks nets and weigh slings
- Padded adjustable rod strap
- Stiffened design for easier carrying

Product Code	Description	Capacity	Length (cm/in)
1325301	5 Star Holdall	5	217 / 85



VANTAGE 3-STAR HOLDALLS

- Hybrid style holdalls
- Universal sizing accepts 12' 12'6" and 13' rods with 50mm guides
- Hybrid design, lower sleeve section, upper protection flap
- Each rod sleeve section has a stiffened butt protector and small external lead pocket
- Landing net handle pocket
- 2 Large external pockets to accept net, banksticks, flotation type weigh slings and storm poles
- Largest outer pocket will accept most broly systems up to 60"
- Smaller outer pocket for banksticks nets and weigh slings
- Padded adjustable rod strap
- Stiffened design for easier carrying

Product Code	Description	Capacity	Length (cm/in)
1325300	3 Star Holdall	3	217 / 85

VANTAGE 4-ROD PLUS QUIVER

- Will accept up to 6 rods when required
- Large enough to accept most quiver compatible shelters
- Unique elasticated rod holders can accept full rod sleeves if required
- Stiffened rod holders
- Rod top and reel compression straps
- Reversible padded shoulder strap
- Side bankstick and Net Pocket
- Small external zipped lead pocket
- Reinforced water resistant base
- Compatible with all the Vantage single rod sleeves



The 'Full System' version of the 4-Rod Plus Quiver comes supplied complete with four of our universal rod sleeves that adapt to suit 12', 12'6 or 13 ft rods.

Product Code	Description	Capacity	Length (cm/in)	Width (cm/in)
1325306	4 Rod Plus Quiver Full System	4-6	130 / 51	36 / 14

VANTAGE 3-ROD PLUS QUIVER

- Will accept up to 5 rods when required
- Large enough to accept most quiver compatible shelters
- Unique elasticated rod holders can accept full rod sleeves if required
- Stiffened rod holders
- Rod top and reel compression straps
- Reversible padded shoulder strap
- Side bankstick and net pocket
- Small external zipped lead pocket
- Reinforced water resistant base
- Compatible with all the Vantage single rod sleeves



The 'Full System' version of the 3-rod Plus Quiver comes supplied complete with three of our universal rod sleeves that adapt to suit 12', 12'6 or 13ft rods.

Product Code	Description	Capacity	Length (cm/in)	Width (cm/in)
1325303	3 Rod Plus Quiver	3-5	130 / 51	31 / 12
1325305	3 Rod Plus Quiver Full System	3-5	130 / 51	31 / 12

VANTAGE 2-ROD PLUS SPECIALIST QUIVER

- Lightweight compact design
- Accepts rods with or without sleeves
- 2 compression straps to keep both rods and reels secure
- Reversible padded shoulder strap
- Reinforced rod holders
- Velcro rod straps
- Reinforced water resistant base
- Rod top and reel compression straps
- Pockets for banksticks, nets, shelter pegs, leads
- Compatible with all the Vantage single rod sleeves



Product Code	Description	Capacity	Length (cm/in)	Width (cm/in)
1325302	2 Rod Plus Quiver	2	120 / 47	24 / 9



VANTAGE UNIVERSAL ROD SLEEVE

- Zips up the back to prevent line damage
- Designed for quick set-up
- Fully padded
- Ingenious registered design allows adjustment for 12', 12'6, and 13' rods.
- Slim sculpted profile to reduce weight and accept 50mm ringing
- Reel expansion section accommodates big pit reels
- Side zipped lead pocket
- Velcro closure carry handle
- Top hanging loop
- Compatible with all Vantage Quivers and System Sleeves

Product Code
1325307



VANTAGE SPOD AND MARKER SLEEVE

- Ingenious registered design allows adjustment for 12', 12'6, and 13' rods.
- Slim sculpted profile to reduce weight and bulk - accepts 50mm ringing
- Reel expansion section accommodates big pit reels
- Internal Velcro pockets for marker floats and spods
- Velcro closure carry handle and removeable padded carry strap
- Top hanging loop
- Compatible with all Vantage System Sleeves

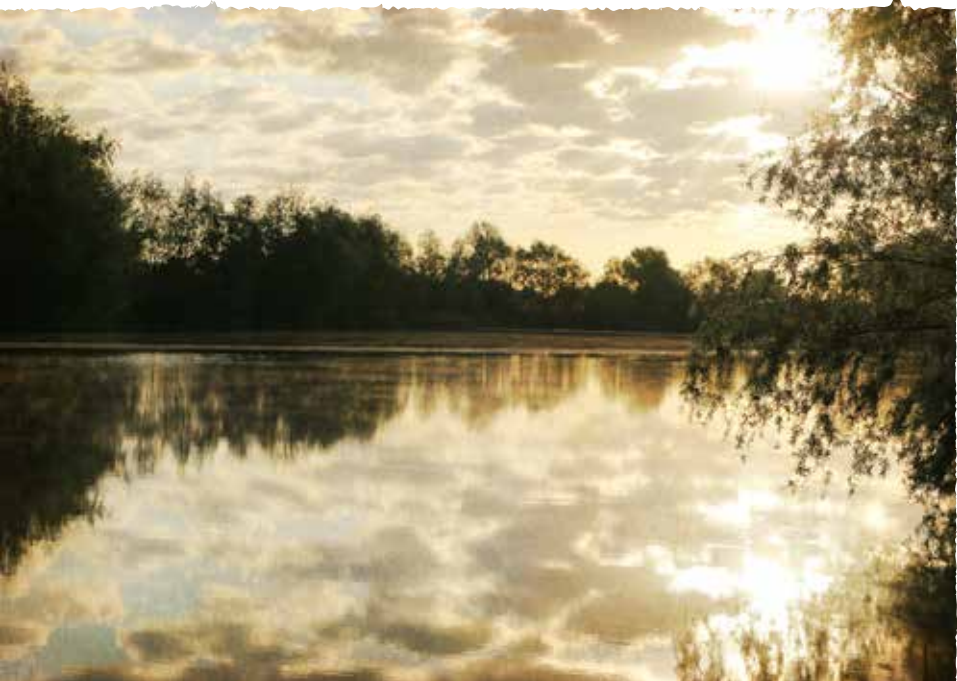
Product Code
1325309



VANTAGE SYSTEM SLEEVES

- Universal sizing to accept 12', 12'6 and 13' rods
- Reinforced tip and butt areas
- Will accept 50mm ringing patterns and big pit reels
- Landing net handle pocket
- 2 large external accessory pockets for banksticks, weigh slings and storm poles
- Large external compression strap pocket – for shelters or extra rod sleeves
- External zipped lead pocket
- 2 internal Velcro pockets
- Stiffened carry handle and large padded shoulder strap
- Compatible with Vantage Universal and Spod & Marker sleeves

Product Code	Description	Capacity	Length (cm/in)
1325310	2 Rod System Sleeve	2 rods	204 / 80
1325311	3 Rod System	3 rods	204 / 80





VANTAGE CARRYALLS

Pocket arrangement designed to maximise internal space.

- Comfortable Velcro locking Neoprene handles
- Fully lined and padded with 3 smaller internal zipped pockets
- Adjustable padded shoulder strap
- Side grab handles (L and XL versions)
- Reinforced stitching and webbing at stress points
- Rigid piping so helps the carryalls keep their shape
- Reinforced easy clean water resistant base material
- Large external pockets compatible with both tackle boxes and accessory pouches



Product Code	Size	Width (cm)	Height (cm)	Depth (cm)	Capacity (litres)
1325293	Medium	42	30	25	50
1325294	Large	55	30	28	70
1325295	X-Large	65	32	30	90

VANTAGE SOLID CARRYALLS

The Vantage Solid Carryalls feature a rigid main compartment that has 3 major advantages: it offers ultimate protection, utilises the maximum inner space and keeps the bag in an upright position when not fully filled. The large closing lid ensures easy access as well as maximum protection for the contents of the main compartment. The clever construction of the inner and outer pockets makes it one of the most versatile bags out there.

- Large main compartment with a lightweight rigid frame
- Rugged hardwearing material with a waterproof base
- Smart pockets with easy access and big capacity
- Luxury Vantage appearance
- Reinforced handles and an adjustable padded shoulder strap



Product Code	Size	Width (cm)	Height (cm)	Depth (cm)	Capacity (litres)
1377403	Medium	55	30	28	-
1377404	Large	67	32	30	-
1377405	X-Large	77	38	34	-

VANTAGE LONG SESSION FOOD BAGS

Larger capacity for all your session food and cooking kit. Removable side pouches can be joined together to create a really useful 24hr micro food bag.

- Insulated lining with adjustable divider and milk bottle insulator
- Removable insulated and brew kit pouches
- Reinforced easy clean water resistant base material
- Adjustable padded shoulder strap
- Supplied with 2 stainless steel knives, forks, large spoons and tea spoons, 1 multi-use tool, 2 plates, 2 aluminium mugs, 2 hand towels, and 2 aluminium storage pots



VANTAGE SHORT SESSION FOOD BAGS

Perfect for organising all your session food and cooking kit. Just grab it and go for short sessions.

- Insulated lining with adjustable divider and milk bottle insulator
- Removable brew kit pouch
- Reinforced easy clean water resistant base material
- Adjustable padded shoulder strap
- Supplied with stainless steel knife, fork, large spoon, tea spoon, multi-use tool, 1 plate, 2 aluminium mugs, 2 hand towels, and 2 aluminium storage pots.



VANTAGE TOILET ROLL HOLDER

- Hanging hook
- Twin zip opening



Product Code	Size	Main Compartment (cm)			Side Pouch	Capacity (litres)
		W	H	D		
1325299	Long Session	42	30	25	16 x 22 x 30	70
1325298	Short Session	34	30	25	16 x 22 x 30	45

Product Code	Height (cm/in)	Depth (cm/in)
1359668	13 / 5.112	16 / 6.29

VANTAGE FRAMED CARRYALL

- Lightweight steel frame
- Aluminium base plate and table top
- Individually adjustable legs
- Easy access front panel whilst table is in use
- Over-flap retaining clips and dual zipped pockets
- Two side quick-grab carry handles
- Well padded adjustable shoulder strap
- Two zipped external mesh pockets



Product Code	Width (cm/in)	Height (cm/in)	Depth (cm/in)
1364430	44 / 17.3	55 / 21.6	35 / 13.7

VANTAGE RIGGER BAG SMALL

- Half moon design
- Main compartment coolstyle lined for insulation
- detachable pouches at each end - one mini rig pouch, one accessory pouch
- Zip-off base in moulded EVA



Product Code	Dimensions (cm/in)
1359661	47x30x21 / 18.5x11.8x8.3

VANTAGE RUCKSACK

- Front section is detachable and designed to hold Chub Smart Box
- Zipped access to rucksack front
- Large interior with elasticated pocket
- Two meshed internal pouches
- Mobile phone pouch
- Meshed pocket in compression hood
- One long and two smaller internal pockets



Product Code	Width (cm/in)	Height (cm/in)	Depth (cm/in)
1364431	44 / 17.3	55 / 21.6	35 / 13.7

VANTAGE RIGGER BAG LARGE

- Removable and washable lining
- Waterproof moulded base
- Coolstyle insulation to main compartment



Product Code	Height (cm/in)	Depth (cm/in)	Width (cm/in)
1359662	28 / 11.02	59 / 23.22	37 / 14.56

VANTAGE DAY-SACK

- Lightweight and compact design
- 20Ltr capacity
- padded shoulders
- Chest harness and waist belt



Product Code	Width (cm/in)	Height (cm/in)	Depth (cm/in)
1359659	35 / 13.7	50 / 19.6	18 / 7.08

VANTAGE ROVA BAG

- External end pockets
- Padded and adjustable dividers in main compartment
- Elastic retainers in front pocket
- Also makes a great camera bag



Product Code	Height (cm/in)	Depth (cm/in)	Width (cm/in)
1359660	26 / 10.2	30 / 11.8	42 / 16.5

VANTAGE COMPACT RIG WALLET

- Hard protective outer case
- Moulded rig bar
- Capacity for over forty rigs
- Small easy-grab Chub pins
- Rigid divider prevents tangles

Product Code	Height (cm/in)	Depth (cm/in)	Width (cm/in)
1359676	25 / 9.84	4.5 / 1.77	16 / 6.29



VANTAGE SPOD & MARKER TUBE

- Hard tube construction for extra protection
- Padded ends prevent flight damage
- Heavy duty 600D nylon cover

Product Code	Size	Length (cm/in)	Diameter (cm/in)
1359675	Large	26 / 10.2	12 / 4.72



VANTAGE SPOOL PROTECTION TUBE

- Rigid casing for extra protection
- Dual zips for easy access
- Padded dividers protect each individual spool
- Three spool capacity
- Fits big pit spoils

Product Code	Size	Length (cm/in)	Diameter (cm/in)
1359671	Large	28 / 11.02	9 / 3.54



VANTAGE ACCESSORY BOXES

- Fully padded
- Compact design
- Zip tops
- Removable velcro dividers



Product Code	Size	Height (cm/in)	Depth (cm/in)	Width (cm/in)
1359672	Small	7.5 / 2.95	17.5 / 6.88	12 / 4.72
1359673	Medium	7.5 / 2.95	17.5 / 6.88	24 / 9.44
1359674	X-Large	7.5 / 2.95	17.5 / 6.88	36 / 14.17

VANTAGE REEL CASE

- Fully padded
- Zipped opening



Product Code	Size	Dimensions (cm/in)
1359666	Standard	18x19x9 / 7.08x7.48x3.54
1359667	Large	22x23x13 / 8.66x9.05x5.12

VANTAGE COOLSTYLE BAIT BAG

- Coolstyle insulated liner
- Easy clean removeable hookbait tray
- Supplied with 6 hookbait containers
- Capacity = 6kg with tray, 10kg without



Product Code	Height (cm/in)	Depth (cm/in)	Width (cm/in)
1359689	22 / 8.6	21 / 8.2	45 / 17.7

VANTAGE INSULATED BAIT BAG

- Designed for use with frozen baits
- Fully insulated main compartment
- Zip-in removeable liner
- External pockets
- Shoulder strap
- Carry handles



Product Code	Length (cm/in)	Width (cm/in)	Height (cm/in)
1359685	35 / 13.7	25 / 9.84	32 / 12.5

VANTAGE COOLSTYLE BAIT & BOILIE POUCH

- Coolstyle insulation
- Compact size



Product Code	Height (cm/in)	Depth (cm/in)	Width (cm/in)
1359688	25 / 9.8	7 / 2.7	28 / 11

VANTAGE COOLSTYLE BAIT BUCKETS

- Coolstyle insulation
- Hardwearing material
- Collapsible
- Zip top
- Waterproof base



Product Code	Size	Height (cm/in)	Diameter (cm/in)
1359681	Small	20 / 7.8	25 / 9.8
1359682	Large	40 / 15.7	30 / 11.8



VANTAGE UNIVERSAL BAIT BUCKETS

- Hardwearing material
- Collapsible
- Zip top
- Waterproof base



Product Code	Size	Height (cm/in)	Diameter (cm/in)
1359679	Small (approx. 2kg)	20 / 7.8	25 / 9.8
1359680	Large (approx. 6kg)	36 / 14.1	28 / 11.0

VANTAGE GROUNDBAIT BOWL

- Collapsible
- Easy-clean
- Hardwearing PVC construction



Product Code	Size	Height (cm/in)	Diameter (cm/in)
1359684	Small	18 / 7.08	30 / 11.8
1359683	Large	17 / 6.69	40 / 15.7

VANTAGE POP UP & BAIT BAG

- The bottom bait compartment has a coolstyle insulated lining to keep frozen bait fresh for longer
- The top compartment contains six screw top hook bait pots
- Padded carry handle



Product Code	Width (cm/in)	Height (cm/in)	Depth (cm/in)
1359687	60 / 23.6	32 / 12.5	27 / 10.6

VANTAGE BITS & BAIT BAG

- Rubberised removable interior liner suitable for particles
- Heavy-duty waterproof base
- External zipped pocket that can hold a Chub Smart Box
- Padded shoulder strap and carry handle



Product Code	Width (cm/in)	Height (cm/in)	Depth (cm/in)
1359686	38 / 14.9	38 / 14.9	20 / 7.8

VANTAGE AIR DRY BAG

- Supplied with hookbait/pop up bad which velcroses to the front
- Strong mesh
- Reinforced handle
- D-ring for carrying or hanging
- Storage pouch included



Product Code	Height (cm/in)	Diameter (cm/in)	Size
1359690	65 / 25.5	50 / 19.6	Large

VANTAGE BAIT CADDY

- Designed to wear around the waist leaving your hands free
- Easy clean inner
- Quick release belt



Product Code	Height (cm/in)	Diameter (cm/in)
1359693	23 / 9.0	35 / 13.7



CARP CARE

Carp care products are increasingly important in the modern fishing scene and our complete range utilises only the best materials, making the process of handling your prize catch easier and safer than ever.



CHUB

X-TRA PROTECTION UPLIFTER CRADLE

Designed to give greater protection by keeping the carp clear of the ground. Also features maximum padding.

- Foldable 2 legged frame for compact transport
- Adjustable leg system
- Full padded fish friendly material
- 1 way closing system
- Cover can be used as waterproof knee pad
- 2 wide mesh bottom sections for perfect water drainage
- Supplied with water proof bag

Product Code	Length (cm/in)	Width (cm/in)	Height (cm/in)	Weight (cm/in)
1404665	113	72	32	-



X-TRA PROTECTION CRADLE

A unique design allows the cradle to fold away flat as well as offering the best fish care possible.

- Chub's own designed U- shaped arm slots
- Unique fold flat design for easy transport
- Improved extra stiff non-collapsible sides
- Smart side pockets
- Padded transportation straps supplied with waterproof bag
- Available in XL size (1404667)

Product Code	Length (cm/in)	Width (cm/in)	Height (cm/in)	Weight (cm/in)
1404666	95	55	21	-
1404667	120	75	26	-



X-TRA PROTECTION DUO MAT

Maximum fish care protection for stalking or static angling.

- Extreme soft and durable outside material
- 8cm Deep cradle design
- Large dimensions when unfolded 120cm x 70cm x 8 cm
- Compact transportation size 60cm x 70cm x 16 cm retaining flap with velcro closure
- 2 Extra clips to attach baits, light, bucket
- Comfortable, strong and adjustable padded shoulderstrap

Product Code	Length (cm/in)	Width (cm/in)	Height (cm/in)	Weight (cm/in)
1404668	120	70	8	-



X-TRA PROTECTION BEANIE MAT

- Improved square shape
- Extreme soft and durable material
- Large mat offering allround protection
- Raised outer filled with polystyrene beads
- Folds together and buckle up for easy carrying
- High density foam centre
- Safety/calming flap



Product Code	Length (cm/in)	Width (cm/in)	Height (cm/in)	Weight (cm/in)
1404673	135	85	10	-



X-TRA PROTECTION BEANIE MAT COMPACT

- Improved square shape
- Extreme soft and durable material
- No-nonsens mat
- Raised outer filled with polystyrene beads
- Folds together for easy carrying



Product Code	Length (cm/in)	Width (cm/in)	Height (cm/in)	Weight (cm/in)
1404672	110	70	7	-



X-TRA PROTECTION OXYGEN FLOATATION SLING

The first retainer sling with an integrated oxygen pump. Designed to combat low oxygen situations in shallow, warm water or weed, giving the carp the best possible chance to recover and reduce the stress of capture.

- Retain fish in warm and/ or weedy waters
- Oxygen in the sling by use of waterproof pump
- Pump operates on 1.5 V batteries
- Light and strong nylon material
- Full length floats for perfect buoyancy
- Reflective material on the corners
- Four carry handles and strong webbing weigh strip with ring
- Bottom made of mesh for perfect water drainage
- Supplied with a bag



Product Code	Length (cm/in)	Width (cm/in)	Height (cm/in)	Weight (cm/in)
1404669	125	50	65	-

X-TRA PROTECTION FLOATATION/ZIP SACK

A perfect combination between a floatation sling and a zipp sack in one product. Ideal for retaining a fish for a short or long period.

- Easy to switch for multiple use of the product
- Remove floatation bars to switch to zip sack
- Strong zippers to open material to remove bars
- 5mtr retaining cord
- High visual marker float included
- Manufactured from our Eazi-Flowgreen mesh
- Supplied with a bag



Product Code	Length (cm/in)	Width (cm/in)	Height (cm/in)	Weight (cm/in)
1404675	125	50	65	-

X-TRA PROTECTION ZIP SACK

- 5 mtr retaining cord
- High visual marker float included
- manufactured from our Eazi-Flow green mesh
- Maximum oxygen flow and quick drying material
- Supplied in a compact roll up water proof bag



Product Code	Length (cm/in)	Width (cm/in)	Height (cm/in)	Weight (cm/in)
1404670	145	-	100	-



X-TRA PROTECTION SAFETY WEIGH SLING

- Handles attached all the way around for total support
- Fish friendly internal material
- Quick drying mesh
- Supplied with a bag



Product Code	Length (cm/in)	Width (cm/in)	Height (cm/in)	Weight (cm/in)
1404674	110	-	65	-

X-TRA PROTECTION FLOATATION SLING

A floatation weigh sling that can retain the fish for a short term and offers safety and security during weighing.

- Light and strong material
- full length floats for perfect buoyancy
- Reflective material on the corners
- Bottom made of mesh for perfect water drainage
- Supplied with a bag



Product Code	Length (cm/in)	Width (cm/in)	Height (cm/in)	Weight (cm/in)
1404671	125	50	65	-

SPREADER BLOCK

- Tough glass-reinforced nylon
- Rubber O-ring for alignment
- Isotope slot

Product Code

1325337



DIGITAL SCALES

- 30kg (66lb) capacity in 25g (1oz) divisions
- Fifty weight memory
- Large easy-read digital LCD display
- Active backlit buttons and display
- Dedicated on/off switch

Product Code

1325232



NET FLOAT

- Fits nets with or without removable block.



Product Code	Length (cm/in)	Diameter (cm/in)
1359664	22 / 8.66	6.5 / 2.55

DIGITAL SCALES POUCH

- Waterproof and padded
- Extra compartment for weigh bars, forceps etc.



Product Code	Height (cm/in)	Width (cm/in)	Depth (cm/in)
1359669	13 / 5.11	24 / 9.44	7 / 2.75

LANDING NET STINK BAG

- Waterproof bag with drawstring closure.



Product Code	Length (cm/in)	Diameter (cm/in)
1359665	115 / 45.2	11 / 4.33







COOKWARE

The most complete cookware range Chub ever made so far. This assortment contains all the equipment you need to make the best meals on the bank.



ALL IN ONE COOK SET

Chub's first complete cookware set contains all the equipment needed to cook on the bank.

- Set contains 2,2L pot, 1,2L pot, 7,5" fry pan, 0,9L kettle, towel
- Made of aluminum and silicone
- High quality and anti-scratch
- Very compact and easy carrying
- All in one packaging



Product Code	Length (cm/in)	Width (cm/in)	Height (cm/in)	Weight
1404687	14	21	21	995gr



3 PIECE COOK SET

- Set contains 2,2L pot, 7,5" fry pan, 1,4L kettle, towel
- Made of aluminum and silicone
- High quality and anti-scratch
- Very compact and easy carrying
- All in one packaging



Product Code	Length (cm/in)	Width (cm/in)	Height (cm/in)	Weight
1404688	14	21	21	890gr

NRG 2PC COOK SET

- Set contains 1,7L pot, 7,5" fry pan
- Made of aluminum and silicone
- High quality and anti-scratch
- Energy gathering loop
- Exhaust hole design
- Very compact and easy carrying
- All in one packaging



Product Code	Length (cm/in)	Width (cm/in)	Height (cm/in)	Weight
1407911	15	20	20	495gr

COFFEE MAKER

Enjoy filter coffee in the outdoors with this trendy coffee maker.

- Fashioned design
- Authentic fragrance
- lightweight
- Good thermal conductivity
- Scratch and corrosion resistance
- Easy to clean
- Sensitive relief valves to ensure the safety



Product Code	Length (cm/in)	Width (cm/in)	Height (cm/in)	Weight
1404691	12	17	12	850gr

SANDWICH MAKER

A popular cookware product that is a must have for many carp anglers. Primarily a sandwich maker, this product is very versatile.

- Made of lightweight aluminum
- Endless possibilities
- Non-Stick coating
- Lockable handles with cool touch
- Strong and anti scratch easy to use and clean



Product Code	Length (cm/in)	Width (cm/in)	Height (cm/in)	Weight
1404693	16	4	35	-

NRG JUMBO KETTLE

NRG kettle with energy gathering loop to improve heat efficiency up to 50%.

- Made of lightweight aluminum
- 1,0L Content
- Energy gathering loop to improve heat efficiency
- Exhaust hole design
- weight 200 gr



Product Code	Length (cm/in)	Width (cm/in)	Height (cm/in)	Weight
1404689	11	14.5	14.5	200gr

FOLDABLE SILICONE KETTLE

This innovative foldable kettle is the future of portable kettle design. High quality, very durable and made of foldable silicone material.

- Silicone body and lid
- Nylon handle
- Stainless steel bottom
- suitable on every stove
- Same use as classic kettles
- Very small transport size
- Totally foldable
- High quality and durable



Product Code	Length (cm/in)	Width (cm/in)	Height (cm/in)	Weight
1404694	20	7.5	20	340gr

CLASSIC KETTLE

- Made of hard anodised aluminum
- Silicone wrapped handle
- 1,0L Content
- Exhaust hole design
- Total weight 180 gr



Product Code	Length (cm/in)	Width (cm/in)	Height (cm/in)	Weight
1404690	11	14.5	14.5	180gr

SCREW-ON GAS STOVE

- 60 Degree taper design
- Annular ring of fire
- Concentrated fire zone up to 2600 W
- Safe to use
- Complete foldable
- Small size and easy to carry



Product Code	Length (cm/in)	Width (cm/in)	Height (cm/in)	Weight
1407912	8.5	9.5	10.8	80gr

ALL SEASON GAS SLEEVE

- Padded exterior - keeps working in freezing conditions and protected from knocks and dents
- Expandable design leaves room to store other items



Product Code	Height (cm/in)	Diameter (cm/in)
1359670	16 / 6.29	15 / 5.90

FOLDABLE GAS STOVE

This foldable stove is a great product in the Vantage cookware range. Very compact with power up to 3000W.

- Made of stainless steel, aluminum and copper
- Airfoil shape bracket
- Small and foldable
- Easy to pack and carry
- Big and plane stove plate
- 3 Stable leg supports
- Extreme concentrated strong fire up to 3000W
- Inclusive separate ignition



Product Code	Length (cm/in)	Width (cm/in)	Height (cm/in)	Weight
1404692	10	6.5	12	170gr

STAINLESS STEEL MUG

- Made of thick stainless steel
- 300ML Content
- Strong and easy to carry



Product Code	Length (cm/in)	Width (cm/in)	Height (cm/in)	Weight
1404695	7.6	8.5	7.6	115gr



SAT-A-LITE

Designed, developed and tested in the UK.





SAT-A-LITE SL-100 HEAD TORCH

- Lightweight and compact headtorch
- Dual light sources, red and white LED's for close and medium range illumination
- Adjustable angle settings
- Two night vision red LEDs



SAT-A-LITE SL-200 HEAD TORCH

- Powerful multi-beam LED headtorch
- Powerful 51lm main beam LED with alternative red LED for close range
- Adjustable angle settings
- Up to 51lm power output



SAT-A-LITE SL-250 HEADLIGHT

- Extremely powerful 125 lumen main beam
- Revolutionary main beam focus control for flood light or x4 spotbeam
- Dual night vision red LEDs
- Single Green LED for night reading
- Adjustable tilt angle



SAT-A-LITE LTX 185 LANTERN

- Powerful and efficient 185 lumen Cree LED
- Dual power setting for increased battery life
- Swivel LED mount for upwards illumination
- Illumination can be side weighted for lower bank disturbance



SAT-A-LITE SL-300 LANTERN

- High powered camping lantern for 360° illumination
- LED bulb never needs to be replaced
- Dual power setting for extended battery life
- Removable end cap for forward illumination
- Built-in hanger hook on lantern base

Product Code	Weight inc. batteries (g/oz)
Sat-A-Lite SL-100 Head Torch 1325405	72 / 2.53
Sat-A-Lite SL-200 Head Torch 1325407	118 / 4.16
Sat-A-Lite SL-250 Headlight 1325408	155 / 5.47
Sat-A-Lite LTX 185 Lantern 1325406	298 / 10.50
Sat-A-Lite SL-300 Lantern 1325409	862 / 30.4



A photograph of a fishing rod set up on a bank. The rod is dark and has several rings. It is positioned diagonally across the frame. In the background, there are tall green reeds and a body of water reflecting the sky. The sky is blue with some white clouds. The overall scene is outdoors and appears to be a fishing spot.

BANKWARE

A range of high grade stainless steel that's very robust and contains innovative features for a real steady rod set up in many varieties.



PRECISION LITE POD BASE

Convert your existing Precision Lite setup into a stable pod system that is ideal for fishing from platforms or hard ground.

- The extending centre bar allows adjustment for all rod lengths and the pivot hinge screws tighten up of complete rigidity
- 100% Stainless Steel construction
- Compatible with all ½ inch (12.7mm) diameter stainless
- Anti-loss thumbscrews
- Travel length 50cm
- Setup length 88-132cm

Product Code	Weight (g/oz)
1325459	950/ 33.5



PRECISION LITE 2/3 ROD ADJUSTABLE BUZZ BARS

- Precision CNC machined high grade stainless steel
- ½" (12.5mm) Diameter
- Tubular inserts for reduced weight
- Chunky Pozi-lock adjustment collars
- Supplied with goal post adaptors
- 2-Rod spacing 162mm, 3-rod spacing 137mm
- Also supplied with four goal post adaptors.

Product Code	Rod	Front (in/cm)	Back (in/cm)	Weight (g/oz)
1325457	2 & 3	7.4/18.7	6.8/17.2	528 / 18.6



PRECISION LITE BANKSTICK STABILISER

- Precision CNC machined high grade stainless steel
- Compatible with all ½" (12.5mm)
- Stainless bank sticks
- Anti-loss thumbscrew
- Compact and lightweight

Product Code	Weight (g/oz)
1325458	96/3.4



PRECISION STAINLESS REAR ROD REST

XL – designed for use with full length cork or Duplon handles

Standard – designed for use with abbreviated or slim Japanese Shrink Wrap handles

Mini – also designed for use with abbreviated or slim Japanese Shrink Wrap handles

- One piece heavy duty stainless steel construction
- Locking collars
- Protective non-slip rubber lining



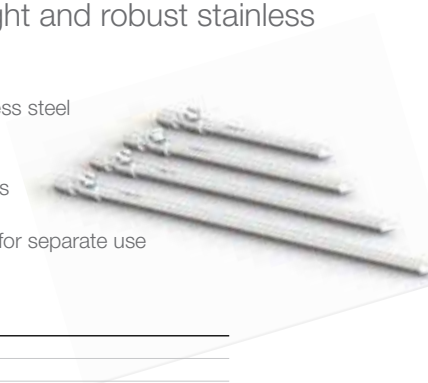
Product Code	Model	Height (cm/in)	Width (cm/in)	Weight (g/oz)
1325441	Standard	3.78 / 1.49	2.69 / 1.06	35 / 1.23
1325446	XL	3.8 / 1.50	3.4 / 1.34	60 / 2.12

PRECISION LITE BANKSTICKS

A range of top quality lightweight and robust stainless with innovative features.

- Precision CNC machined high grade stainless steel
- ½" (12.5mm) Diameter
- Tubular inserts for reduced weight
- Inner and outer section solid stainless points
- Anti-loss thumbscrew
- Hollow inner tube finished with Spike point for separate use

Product Code	Size (in/cm)	Weight (g/oz)
1325452	9 / 22.9	170 / 6.0
1325453	12 / 30.5	210 / 7.4
1325454	16 / 40.6	270 / 9.5
1325455	20 / 50.8	325 / 11.5



PRECISION BANK STICK AUGER

- Removable T-Bar
- Solid screw auger point

Product Code
1325456



PRECISION BASE POD

Convert your existing Precision set up into a stable pod system for use in hard ground.

- The extending centre bar allows adjustment for all rod lengths
- The pivot hinge screws tighten up of complete rigidity
- 100% stainless steel construction
- Compatible with all 5/8" (16mm) diameter stainless
- Transport length 50cm
- Setup length 88-132cm
- Anti lost screws

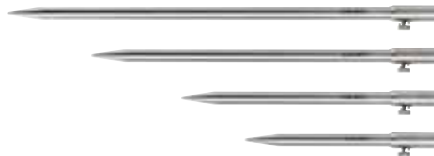


Product Code	Weight (g/oz)
1404685	-

PRECISION BANKSTICK

A chunky range of high grade stainless steel that's very robust and contains innovative features.

- High grade stainless steel
- Tubular inserts for reduced weight
- Anti lost screw
- Long tapered points
- Tapered collars



Product Code	Size (cm/in)
1404679	50 / 20
1404676	23 / 9
1404677	30 / 12
1404678	40 / 16

PRECISION BUZZ BAR

- Protected caps on the collars when not in use
- Two and three rod designs available
- For single bankstick and goalpost set up
- Adjustable arm extensions for wider spread or goalpost setup
- Tubular inserts for reduced weight
- anti lost screws
- Sold in pairs



1404682



1404683



1404680



1404681



Product Code	Size (cm/in)
1404682	15-18 / 6-7
1404681	33-38 / 13-15
1404680	19-22 / 7.5-8.5
1404683	25 - 30 / 10-12

PRECISION PLATFORM SUPPORT STAND

- Designed to aid the use of banksticks when fishing from platforms
- Manufactured from anodised aluminium
- Simply attached to the platform by a centre screw
- Supplied with an inner adapter sleeve which allows to use Precision or most standard size banksticks

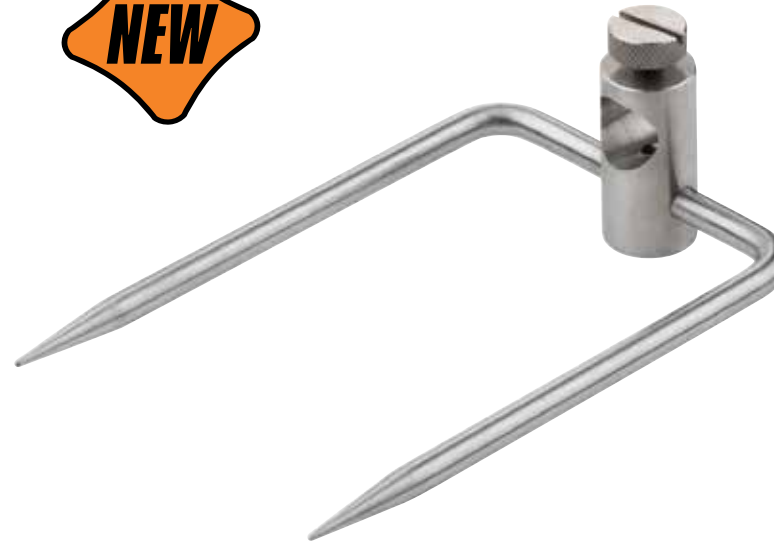


Product
Code
1404686



PRECISION STABILIZER

- Anti-twist design
- Two sprongs for perfect stability
- Anti loss screw
- Compatible with all 5/8" (16mm) diameter stainless



Product
Code
1404684





S.A.P. Scannable UPC

RODS

OUTKAST & OUTKAST SMALL WATER

1364409	
1359697	
1359696	
1359698	
1359699	
1359700	
1359701	
1359702	
1359703	
1359704	
1359705	
1359706	

OUTKAST PLUS STALKING RODS

1325359	
1325360	
1325361	

OUTKAST SPOD

1359707	
---------	--

OUTKAST MARKER

1359708	
---------	--

OUTKAST NET

1359711	
---------	--

RS-PLUS

1378047	
1378048	
1378149	
1378150	
1378151	
1378152	

RS-PLUS SPOD

1378155	
---------	--

RS-PLUS MARKER

1378154	
---------	--

RS-PLUS LANDING NET

1378156	
---------	--

VANTAGE FINGER STALL

1325241	
---------	--

S.A.P. Scannable UPC

VANTAGE TIP TECTORs

1325288	
---------	--

VANTAGE NEOPRENE ROD BANDS

1325289	
---------	--

VANTAGE REEL WRAP

1325290	
---------	--

BIVVIES

VANTAGE BIVVY

1378166	
1378168	

VANTAGE OVERWRAP

1378167	
1378169	

VIZOR LITE BIVVY

1359709	
---------	--

VIZOR LITE OVERWRAP

1359710	
---------	--

CYFISH BIVVY

1404661	
1404662	

CYFISH DOME

1404663	
1404664	

TRI-BRID SHELTER

1325461	
---------	--

TRI-BRID OVERWRAP

1325462	
---------	--

RS-PLUS MAX BIVVY

1325469	
---------	--

RS-PLUS BIVVY

1325471	
---------	--

RS-PLUS MAX OVERWRAP

1325470	
---------	--

RS-PLUS OVERWRAP

1325473	
---------	--

RS-PLUS SHELTER

1325472	
---------	--

OVAL UMBRELLAS - 55" & 60"

1325088	
1325089	

S.A.P. Scannable UPC

BIVVY PEGS

1325079	
---------	--

20 PEG PACK

1325379	
---------	--

BIVVY TABLE

1325109	
---------	--

BEDCHAIR PILLOW

1325078	
---------	--

FURNITURE

VANTAGE FLATBED WIDE 8-LEG

1378157	
---------	--

VANTAGE FLATBED WIDE 8-LEG

1378158	
---------	--

OUTKAST FLATBED

1377364	
---------	--

RS-PLUS BEDCHAIR

1378161	
---------	--

RS-PLUS CHAIR MATE

1378165	
---------	--

VANTAGE CHAIR

1378159	
---------	--

VANTAGE LONG LEG RECLINER

1378160	
---------	--

OUTKAST CHAIR

1377365	
---------	--

RS-PLUS SUPERLITE CHAIR

1378164	
---------	--

RS-PLUS COMFY CHAIR

1378163	
---------	--

RS-PLUS CHAIR

1378162	
---------	--

SLEEPING BAGS

VANTAGE 5 SEASON SLEEPING BAG

1404658	
1404659	

VANTAGE WATERPROOF BED COVER

1404657	
---------	--

VANTAGE THERMAL BED COVER

1404660	
---------	--

S.A.P. Scannable UPC

OUTKAST SLEEPING BAG

1404655	
---------	--

OUTKAST TOPSKIN

1404656	
---------	--

VANTAGE SLEEPING BAG CARRYALL

1359663	
---------	--

CLOTHING / FOOTWEAR

VANTAGE ALL WEATHER SUIT

1377366	
1377367	
1377368	
1377369	
1377370	

VANTAGE HYBRID JACKET

1377371	
1377372	
1377373	
1377374	
1377375	

VANTAGE QUILTED BODYWARMER

1377376	
1377377	
1377378	
1377379	
1377380	

VANTAGE PULL OVER HOODY

1377386	
1377387	
1377388	
1377389	
1377390	

VANTAGE ZIP UP HOODY

1377381	
1377382	
1377383	
1377384	
1377385	

S.A.P. Scannable UPC

VANTAGE JOGGER

1377391	
1377392	
1377393	
1377394	
1377395	

VANTAGE BASE LAYER

1377396	
1377397	
1377398	
1377399	
1377400	

VANTAGE BEANIE HAT

1377401	
---------	--

VANTAGE CAP

1377402	
---------	--

VANTAGE FIELD BOOT

1404635	
1404636	
1404637	
1404638	
1404639	
1404640	

VANTAGE ANKLE BOOT

1404642	
1404643	
1404644	
1404645	
1404646	
1404647	

VANTAGE CAMO TRAINERS

1404649	
1404650	
1404651	
1404652	
1404653	
1404654	

S.A.P. Scannable UPC

BAGS / STORAGE

TRANSPORTER BARROW

1325365

VANTAGE BARROW BAG LARGE

1325292

VANTAGE BARROW BAG MEDIUM

1325291

VANTAGE 5-STAR HOLDALLS

1325301

VANTAGE 3-STAR HOLDALLS

1325300

VANTAGE 4-ROD PLUS QUIVER

1325306

VANTAGE 3-ROD PLUS QUIVER

1325303

1325305

VANTAGE 2-ROD PLUS SPECIALIST QUIVER

1325302

VANTAGE UNIVERSAL ROD SLEEVE

1325307

VANTAGE SPOD AND MARKER SLEEVE

1325309

VANTAGE SYSTEM SLEEVES

1325310

1325311

VANTAGE CARRYALLS

1325293

1325294

1325295

VANTAGE SOLID CARRYALLS

1377403

1377404

1377405

VANTAGE SHORT SESSION FOOD BAGS

1325299

1325298

VANTAGE TOILET ROLL HOLDER

1359668

S.A.P. Scannable UPC

VANTAGE FRAMED CARRYALL

1364430

VANTAGE RUCKSACK

1364431

VANTAGE DAY-SACK

1359659

VANTAGE RIGGER BAG SMALL

1359661

VANTAGE RIGGER BAG LARGE

1359662

VANTAGE ROVA BAG

1359660

VANTAGE COMPACT RIG WALLET

1359676

VANTAGE SPOD & MARKER TUBE

1359675

VANTAGE SPOOL PROTECTION TUBE

1359671

VANTAGE ACCESSORY BOXES

1359672

1359673

1359674

VANTAGE REEL CASE

1359666

1359667

VANTAGE COOLSTYLE BAIT BAG

1359689

VANTAGE COOLSTYLE BAIT & BOILIE POUCH

1359688

VANTAGE INSULATED BAIT BAG

1359685

VANTAGE COOLSTYLE BAIT BUCKETS

1359681

1359682

VANTAGE UNIVERSAL BAIT BUCKETS

1359679

1359680

S.A.P. Scannable UPC

VANTAGE POP UP & BAIT BAG

1359687

VANTAGE AIR DRY BAG

1359690

VANTAGE GROUNDBAIT BOWL

1359684

1359683

VANTAGE BITS & BAIT BAG

1359686

VANTAGE BAIT CADDY

1359693

CARP CARE

X-TRA PROTECTION UPLIFTER CRADLE

1404665

X-TRA PROTECTION CRADLE

1404666

1404667

X-TRA PROTECTION DUO MAT

1404668

X-TRA PROTECTION BEANIE MAT

1404673

X-TRA PROTECTION BEANIE MAT COMPACT

1404672

X-TRA PROTECTION OXYGEN FLOATATION SLING

1404669

X-TRA PROTECTION FLOATATION/ZIP SACK

1404675

X-TRA PROTECTION ZIP SACK

1404670

X-TRA PROTECTION SAFETY WEIGH SLING

1404674

X-TRA PROTECTION FLOATATION SLING

1404671

SPREADER BLOCK

1325337

NET FLOAT

1359664

S.A.P. Scannable UPC

LANDING NET STINK BAG

1359665

DIGITAL SCALES

1325232

DIGITAL SCALES POUCH

1359669

COOKWARE

ALL IN ONE COOK SET

1404687

3 PIECE COOK SET

1404688

NRG 2PC COOK SET

1407911

COFFEE MAKER

1404691

SANDWICH MAKER

1404693

NRG JUMBO KETTLE

1404689

FOLDABLE SILICONE KETTLE

1404694

CLASSIC KETTLE

1404690

SCREW-ON GAS STOVE

1407912

ALL SEASON GAS SLEEVE

1359670

FOLDABLE GAS STOVE

1404692

STAINLESS STEEL MUG

1404695

SAT-A-LITE

SAT-A-LITE SL-100 HEAD TORCH

1325405

SAT-A-LITE SL-200 HEAD TORCH

1325407

SAT-A-LITE SL-250 HEADLIGHT

1325408

S.A.P. Scannable UPC

SAT-A-LITE LTX 185 LATERNE:

1325406

SAT-A-LITE SL-300 LATERNE:

1325409

BANKWARE

PRECISION LITE POD BASE

1325459

PRECISION LITE 2/3 ROD ADJUSTABLE BUZZ BARS

1325457

PRECISION LITE BANKSTICK STABILISER

1325458

PRECISION STAINLESS REAR ROD REST

1325441

1325446

PRECISION LITE BANKSTICKS

1325452

1325453

1325454

1325455

PRECISION BANK STICK AUGER

1325456

PRECISION BASE POD

1404685

PRECISION BANKSTICK

1404679

1404676

1404677

1404678

PRECISION BUZZ BAR

1404682

1404681

1404680

1404683

PRECISION PLATFORM SUPPORT STAND

1404686

PRECISION STABILIZER

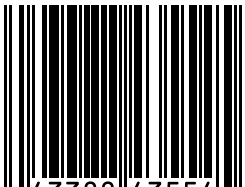
1404684







CHUB 2017 PRODUCT MANUAL



0 43388 43554 5

1425085

Chub Fishing

Willowburn, Alnwick, Northumberland NE66 2PF England.

+44 (0)1665 602771

www.chubfishing.com